



MONTHLY SUMMARY OF STATISTICS

VICTORIA

EMBARGO: 11:30AM (CANBERRA TIME) TUES 23 OCT 2001

CONTENTS

	<i>page</i>
Notes	2
Selected features	3
TABLES	
List of tables.....	4
Demography.....	5
Labour.....	6
Wages.....	9
Prices.....	9
Meat production.....	10
Building.....	11
Finance.....	14
Retail.....	15
Trade.....	16
Tourism.....	18

- For further information about these and related statistics, contact the National Information and Referral Service on 1300 135 070, or James Darragh on Melbourne 03 9615 7476.

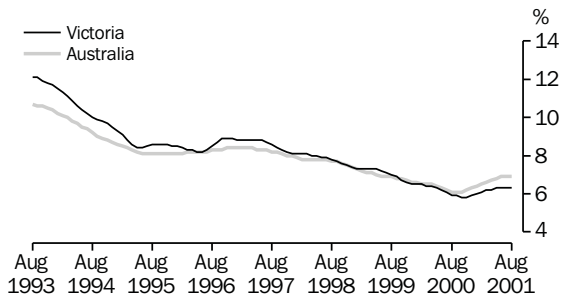
NOTES

FORTHCOMING ISSUES	<table border="0" style="width: 100%;"> <tr> <td style="width: 50%;">October 2001</td> <td style="width: 50%;">20 November 2001</td> </tr> <tr> <td>November 2001</td> <td>18 December 2001</td> </tr> <tr> <td>December 2001</td> <td>22 January 2002</td> </tr> </table>	October 2001	20 November 2001	November 2001	18 December 2001	December 2001	22 January 2002
October 2001	20 November 2001						
November 2001	18 December 2001						
December 2001	22 January 2002						
SEASONAL ADJUSTMENT	<p>Seasonal adjustment is a means of removing the estimated effects of normal seasonal variations from economic time series so that the effects of other influences are obvious. Seasonal variations are the systematic (though not necessarily regular) intra-year movements of economic time series. These are often the result of non-economic phenomena, such as climatic changes and regular religious festivals, e.g. Christmas and Easter.</p>						
TREND ESTIMATE	<p>Smoothing seasonally adjusted series produces a measure of trend by removing the impact of the irregular component of the series. The trend estimates are derived by applying a 13-term Henderson weighted moving average to the respective seasonally adjusted series. Readers are reminded that trend estimates are subject to revision as subsequent months' data become available.</p>						
CHANGES IN THIS ISSUE	<p>There are no changes in this issue.</p>						
SYMBOLS AND OTHER USAGES	<p>n.a. not available n.e.c. not elsewhere classified n.p. not available for publication but included in totals where applicable n.y.a. not yet available p preliminary — figure or series subject to revision r figure or series revised since previous issue * estimate has a relative standard error greater than 25% and is therefore subject to sampling variability too high for most practical uses . . not applicable — nil or rounded to zero</p>						

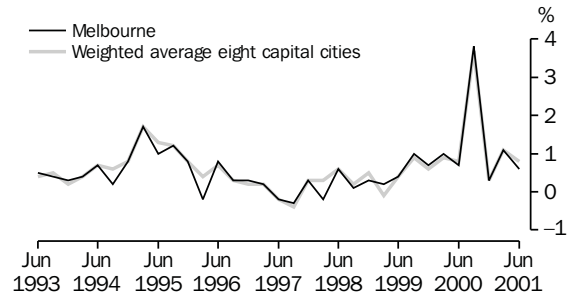
Zia ABBASI,
Regional Director, Victoria

SELECTED FEATURES

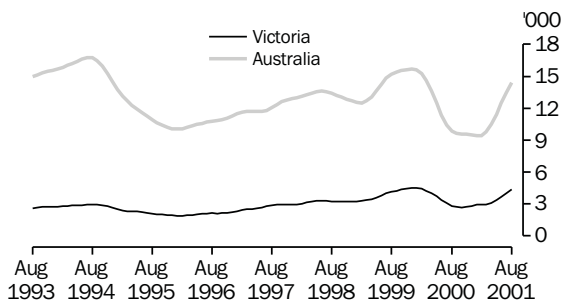
UNEMPLOYMENT RATE, Trend—Monthly



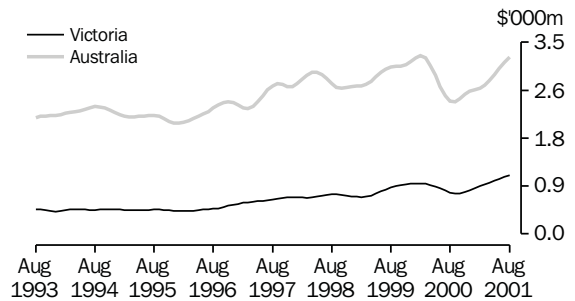
CONSUMER PRICE INDEX, Change from previous quarter



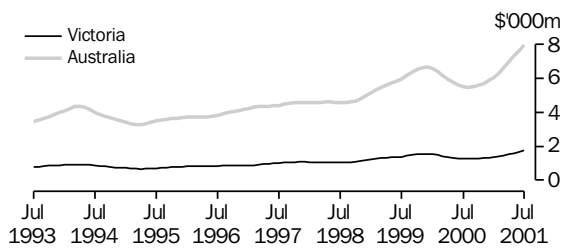
NEW DWELLING UNITS APPROVED, Trend—Monthly



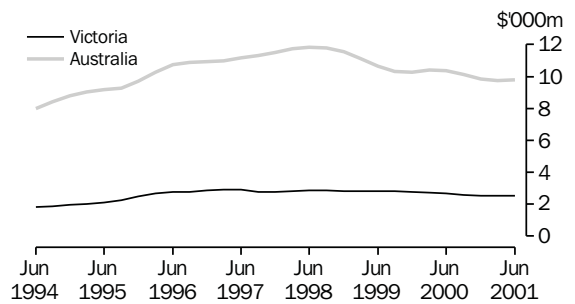
VALUE OF ALL BUILDINGS APPROVED, Trend—Monthly



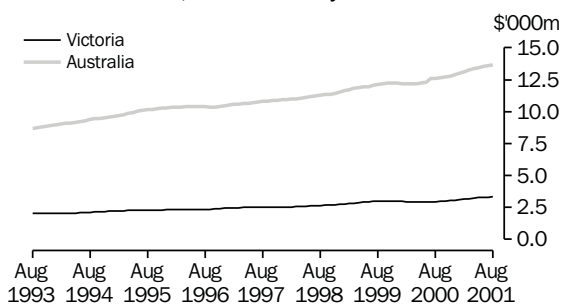
TOTAL VALUE OF SECURED HOUSING FINANCE COMMITMENTS TO INDIVIDUALS, Trend—Monthly



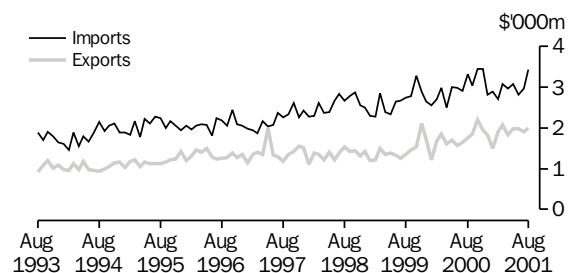
PRIVATE NEW CAPITAL EXPENDITURE, Trend—Quarterly



RETAIL TURNOVER, Trend—Monthly



MERCHANDISE IMPORTS AND EXPORTS, Original—Monthly



LIST OF TABLES

			Page
DEMOGRAPHY	1	Estimated resident population	5
	2	Births, deaths, marriages and divorces	5
LABOUR	3	Labour force status of the civilian population aged 15 years and over	6
	4	Employed persons, by industry	7
	5	Job vacancies	8
	6	Industrial disputes causing stoppage of work	8
	7	Average weekly earnings of employees	9
PRICES	8	Consumer price index — Melbourne	9
	9	Price index of materials used in building — Melbourne	10
MEAT PRODUCTION	10	Livestock slaughterings	10
	11	Meat production	11
BUILDING	12	New houses and other residential buildings, number of dwelling units	11
	13	Building approvals — Melbourne and Victoria	12
	14	Value of building	13
FINANCE	15	Private new capital expenditure, by selected industries and type of asset	14
	16	Commercial finance commitments	14
	17	Secured housing finance commitments, dwelling units	15
RETAIL	18	Retail turnover, by industry (excluding motor vehicles, parts, petrol, etc.)	15
TRADE	19	Exports and imports, by sections of the Australian Export and Import Classifications	16
	20	Overseas trade, major trading partners	17
	21	Value of overseas trade — Victoria and Australia	18
TOURISM	22	Tourist accommodation	18

1

ESTIMATED RESIDENT POPULATION

Period	At end of period			Increase during period		Melbourne Statistical Division at 30 June(a)
	Males '000	Females '000	Persons '000	Natural '000	Total '000	
1997-98	2 301.0	2 353.9	4 654.9	27.7	49.7	3 367.0
1998-99	2 328.1	2 379.5	4 707.6	27.1	52.7	3 413.9
1999-2000	r 2 359.0	r 2 407.8	r 4 766.8	r 27.7	r 59.2	p 3 466.0
1999						
March qtr	2 322.7	2 374.5	4 697.2	7.7	13.1	..
June qtr	2 328.1	2 379.5	4 707.6	6.4	10.4	..
September qtr	r 2 336.3	r 2 386.7	r 4 723.0	r 7.0	r 15.4	..
December qtr	r 2 343.7	r 2 394.5	r 4 738.2	r 7.0	r 15.2	..
2000						
March qtr	r 2 352.8	r 2 402.4	r 4 755.2	r 7.3	r 17.0	..
June qtr	r 2 359.0	r 2 407.8	r 4 766.8	r 6.4	r 11.6	..
September qtr p (b)	2 368.2	2 415.6	4 783.8	6.2	17.0	..
December qtr p (b)	2 375.6	2 422.7	4 798.3	6.2	14.5	..
2001						
March qtr p (c)	2 385.5	2 430.6	4 816.1	6.7	17.8	..

(a) Based on 2000 Statistical Local Area Boundaries.

(b) Special Arrangements were put in place to obtain overseas migration data for September and December quarters 2000 and, as a consequence, the estimates resident population (ERP) at 30 September and 30 December 2000. Further information on notes can be obtained from the source publication listed below and Demography Working Paper 2001/1 — Estimating July to December 2000 Net Overseas Migration, available from the ABS website, <http://www.abs.gov.au>.

(c) Net overseas migration for March quarter 2001 is an assumption consistent with the medium net overseas migration assumption included in Population Projections, Australia, 1999-2000 (ABS. Cat. no. 3222.0). Hence the resident population at 31 March 2001 is a projection.

2

BIRTHS, DEATHS, MARRIAGES AND DIVORCES

Period	Registrations				Annual rate per 1,000 of mean estimated resident population				
	Births no.	Deaths (including infant deaths) no.	Marriages no.	Divorces no.	Births rate	Deaths rate	Marriages rate	Divorces rate	Infant deaths per 1,000 live births rate
1997-98	60 143	32 423	25 955	11 916	13.00	7.01	5.61	2.58	4.86
1998-99	59 374	32 298	26 351	12 579	12.68	6.90	5.63	2.69	5.36
1999-2000	r 59 733	r 31 992	r 27 558	12 818	r 12.61	r 6.75	r 5.82	2.71	r 5.09
1998									
March qtr	14 577	7 169	8 530	2 663
June qtr	14 870	8 097	6 070	2 908
September qtr	15 197	8 984	3 912	3 188
December qtr	14 648	7 850	7 860	3 548
Year—1998	59 292	32 100	26 372	12 307	12.74	6.90	5.67	2.64	4.82
1999									
March qtr	14 939	7 259	8 657	2 738
June qtr	14 590	8 205	5 922	3 105
September qtr	r 15 655	r 8 636	4 211	3 461
December qtr	r 14 909	r 7 912	8 462	3 438
Year—1999	r 60 093	r 32 012	27 252	12 742	r 12.77	r 6.8	5.79	2.71	r 5.44
2000									
March qtr	r 14 626	r 7 350	r 8 683	2 733
June qtr	r 14 543	r 8 094	r 6 202	3 186
September qtr	p 14 633	p 8 403	r 3 943	3 088
December qtr	p 15 520	p 9 356	8 024	r 3 394
Year—2000	p 59 322	p 33 203	r 26 852	r 12 401	p 12.44	p 6.97	5.63	2.6	r 4.74
2001									
March qtr p	13 609	6 870	8 049	2 590

Source: Australian Demographic Statistics (Cat. no. 3101.0) (quarterly).

3

LABOUR FORCE STATUS OF THE CIVILIAN POPULATION AGED 15 YEARS AND OVER(a)

	<i>Employed</i>		<i>Unemployed looking for work</i>			<i>Labour force</i>	<i>Not in labour force</i>	<i>Civilian population 15 years and over</i>	<i>Unemployment rate</i>	<i>Participation rate</i>
	<i>Full-time</i>	<i>Total</i>	<i>Full-time</i>	<i>Part-time</i>	<i>Total</i>					
	'000	'000	'000	'000	'000					
MALES										
2000										
June	1 089.2	1 262.1	65.4	14.5	79.9	1 342.0	524.5	1 866.5	6.0	71.9
July	1 114.8	1 287.5	60.4	10.7	71.1	1 358.5	510.5	1 869.0	5.2	72.7
August	1 093.3	1 267.7	64.9	17.5	82.4	1 350.0	521.5	1 871.5	6.1	72.1
September	1 116.9	1 289.4	70.0	15.0	85.0	1 374.4	499.7	1 874.1	6.2	73.3
October	1 125.3	1 296.2	68.6	10.8	79.4	1 375.6	501.5	1 877.1	5.8	73.3
November	1 132.4	1 299.1	66.8	13.7	80.6	1 379.6	500.5	1 880.1	5.8	73.4
December	1 151.2	1 318.0	67.4	19.5	86.9	1 404.9	478.2	1 883.1	6.2	74.6
2001										
January	1 124.0	1 294.4	70.7	14.2	84.9	1 379.2	506.8	1 886.0	6.2	73.1
February	1 134.5	1 313.6	75.1	14.4	89.6	1 403.2	485.7	1 888.9	6.4	74.3
March	1 114.6	1 292.1	68.4	19.6	88.0	1 380.1	511.7	1 891.8	6.4	73.0
April	1 122.2	1 304.2	67.5	21.3	88.8	1 393.0	501.2	1 894.3	6.4	73.5
May	1 115.9	1 301.7	61.5	21.4	82.8	1 384.5	512.2	1 896.8	6.0	73.0
June	1 107.5	1 302.5	65.0	14.9	80.0	1 382.5	516.8	1 899.3	5.8	72.8
July	1 106.5	1 301.8	66.3	16.3	82.6	1 384.4	517.4	1 901.8	6.0	72.8
August	1 095.6	1 285.8	72.3	16.7	89.0	1 374.8	529.5	1 904.4	6.5	72.2
FEMALES										
2000										
June	563.1	1 014.3	41.6	20.2	61.8	1 076.1	869.2	1 945.3	5.7	55.3
July	575.3	1 022.2	39.5	23.2	62.7	1 084.9	862.9	1 947.8	5.8	55.7
August	550.4	1 005.0	39.1	18.6	57.7	1 062.7	887.6	1 950.3	5.4	54.5
September	568.6	1 024.5	41.6	24.6	66.2	1 090.7	862.0	1 952.8	6.1	55.9
October	571.4	1 011.4	33.3	23.6	56.9	1 068.3	887.0	1 955.3	5.3	54.6
November	559.2	999.4	35.3	17.8	53.1	1 052.4	905.3	1 957.8	5.0	53.8
December	577.7	1 014.9	33.9	22.9	56.8	1 071.8	888.5	1 960.3	5.3	54.7
2001										
January	566.7	982.7	39.7	24.4	64.0	1 046.8	915.9	1 962.7	6.1	53.3
February	572.5	1 002.0	42.6	33.9	76.5	1 078.5	886.5	1 965.0	7.1	54.9
March	568.0	1 013.7	37.7	36.0	73.7	1 087.4	880.0	1 967.4	6.8	55.3
April	563.4	1 006.4	41.8	25.3	67.1	1 073.5	895.8	1 969.3	6.3	54.5
May	561.9	1 011.3	46.8	27.8	74.6	1 085.9	885.4	1 971.3	6.9	55.1
June	551.9	1 019.6	41.7	24.7	66.4	1 086.0	887.3	1 973.3	6.1	55.0
July	559.0	1 019.1	42.6	22.4	64.9	1 084.0	891.4	1 975.4	6.0	54.9
August	552.9	1 017.3	40.9	22.1	63.0	1 080.3	897.3	1 977.5	5.8	54.6
PERSONS										
2000										
June	1 652.3	2 276.4	107.1	34.7	141.7	2 418.1	1 393.7	3 811.8	5.9	63.4
July	1 690.1	2 309.7	99.9	33.9	133.8	2 443.4	1 373.4	3 816.8	5.5	64.0
August	1 643.7	2 272.7	104.0	36.1	140.0	2 412.7	1 409.1	3 821.8	5.8	63.1
September	1 685.5	2 313.9	111.7	39.6	151.2	2 465.2	1 361.7	3 826.8	6.1	64.4
October	1 696.7	2 307.6	101.9	34.4	136.3	2 443.9	1 388.5	3 832.4	5.6	63.8
November	1 691.6	2 298.4	102.1	31.5	133.6	2 432.1	1 405.8	3 837.9	5.5	63.4
December	1 728.9	2 332.9	101.3	42.4	143.7	2 476.7	1 366.7	3 843.4	5.8	64.4
2001										
January	1 690.7	2 277.1	110.4	38.6	148.9	2 426.0	1 422.6	3 848.7	6.1	63.0
February	1 707.1	2 315.6	117.8	48.3	166.1	2 481.7	1 372.2	3 853.9	6.7	64.4
March	1 682.6	2 305.7	106.2	55.6	161.7	2 467.5	1 391.7	3 859.2	6.6	63.9
April	1 685.6	2 310.7	109.3	46.6	155.9	2 466.6	1 397.0	3 863.6	6.3	63.8
May	1 677.8	2 313.0	108.2	49.2	157.4	2 470.4	1 397.7	3 868.1	6.4	63.9
June	1 659.4	2 322.1	106.8	39.7	146.4	2 468.5	1 404.1	3 872.6	5.9	63.7
July	1 665.5	2 320.9	108.8	38.7	147.5	2 468.4	1 408.8	3 877.2	6.0	63.7
August	1 648.5	2 303.1	113.2	38.8	152.0	2 455.1	1 426.8	3 881.9	6.2	63.2

(a) From April 2001 the Labour Force Survey was conducted using a redesigned questionnaire containing additional data items and some minor definitional changes. Although the impact on core labour force series has been minor, revisions have been made to estimates previously published in this table to ensure continuity. The revised series were released on 3 May 2001. Information Paper: *Implementing the Redesigned Labour Force Survey Questionnaire* (Cat. no. 6295.0) contains further information about the questionnaire changes and the revised series. For details on the content of the redesigned questionnaire, see Information Paper: *Questionnaires Used in the Labour Force Survey* (Cat. no. 6232.0).

Source: Labour Force, Victoria (Cat. no. 6202.2) (quarterly).

4

EMPLOYED PERSONS, BY INDUSTRY(a)

	May 2000	Aug 2000	Nov 2000	Feb 2001	May 2001	Aug 2001
Industry division	'000	'000	'000	'000	'000	'000
MALES						
Agriculture, forestry and fishing	63.2	62.3	61.7	58.1	61.9	57.4
Mining	7.4	5.4	5.5	4.8	*3.5	*3.2
Manufacturing	256.0	264.3	274.6	264.8	260.6	257.3
Electricity, gas and water supply	14.2	12.2	12.4	11.8	13.3	15.3
Construction	140.5	140.4	148.7	143.4	137.9	140.5
Wholesale trade	76.9	71.9	71.0	69.4	74.9	69.7
Retail trade	163.8	149.4	151.4	163.0	171.0	183.3
Accommodation, cafes and restaurants	46.0	41.8	51.7	50.2	49.6	40.8
Transport and storage	72.8	72.7	78.3	82.0	80.8	80.3
Communication services	38.2	37.8	38.1	39.2	40.9	35.6
Finance and insurance	38.7	42.2	39.4	44.8	42.1	44.0
Property and business services	143.6	157.8	165.7	165.0	147.7	141.3
Government administration and defence	29.3	31.6	34.0	40.4	37.6	38.2
Education	44.2	47.5	42.1	47.9	52.2	58.2
Health and community services	44.0	50.9	48.8	52.7	50.3	46.8
Cultural and recreational services	32.4	35.5	31.2	32.8	32.0	30.1
Personal and other services	43.6	42.2	42.6	40.3	45.5	43.7
Total(b)	1 256.7	1 267.7	1 299.1	1 313.6	1 301.7	1 285.8
FEMALES						
Agriculture, forestry and fishing	29.2	30.1	30.8	33.9	30.2	33.9
Mining	*2.0	*2.0	*0.5	*0.6	*0.3	*0.6
Manufacturing	108.1	105.9	106.1	100.5	104.1	103.8
Electricity, gas and water supply	*2.8	*1.7	*2.8	*4.2	*4.4	5.2
Construction	17.4	19.2	20.1	17.4	16.6	17.6
Wholesale trade	37.2	35.8	32.8	34.4	33.4	33.5
Retail trade	170.7	167.0	164.2	173.1	168.0	176.8
Accommodation, cafes and restaurants	56.9	54.7	59.6	53.7	52.9	50.1
Transport and storage	23.7	25.7	21.6	24.5	26.7	23.6
Communication services	17.5	18.2	17.4	16.9	16.5	13.6
Finance and insurance	48.1	48.5	46.4	44.3	50.5	49.9
Property and business services	118.4	129.4	122.1	116.7	115.1	114.5
Government administration and defence	34.8	39.3	45.2	46.1	48.9	42.4
Education	99.8	108.3	102.6	96.3	102.0	107.5
Health and community services	158.7	161.1	156.3	171.8	172.1	174.4
Cultural and recreational services	28.4	28.0	34.4	27.2	25.6	28.4
Personal and other services	36.9	26.4	33.1	38.9	43.9	41.4
Total(b)	992.8	1 005.0	999.4	1 002.0	1 011.3	1 017.3
PERSONS						
Agriculture, forestry and fishing	92.4	92.3	92.5	92.0	92.1	91.3
Mining	9.3	7.4	6.0	5.4	*3.9	*3.8
Manufacturing	364.1	370.1	380.7	365.4	364.7	361.1
Electricity, gas and water supply	17.0	13.9	15.2	16.0	17.6	20.5
Construction	157.9	159.7	168.7	160.9	154.5	158.1
Wholesale trade	114.1	107.6	103.9	103.8	108.3	103.2
Retail trade	334.5	316.4	315.6	336.1	338.9	360.1
Accommodation, cafes and restaurants	102.9	96.5	111.2	103.9	102.5	91.0
Transport and storage	96.5	98.5	99.9	106.5	107.5	103.9
Communication services	55.7	56.0	55.5	56.2	57.4	49.2
Finance and insurance	86.8	90.8	85.8	89.2	92.5	94.0
Property and business services	262.0	287.1	287.8	281.7	262.8	255.8
Government administration and defence	64.1	71.0	79.2	86.5	86.5	80.6
Education	144.0	155.8	144.8	144.3	154.2	165.7
Health and community services	202.7	212.0	205.0	224.4	222.4	221.2
Cultural and recreational services	60.8	63.5	65.6	60.0	57.6	58.5
Personal and other services	80.5	68.6	75.7	79.2	89.5	85.1
Total(b)	2 249.6	2 272.7	2 298.4	2 315.6	2 313.0	2 303.1

(a) From April 2001 the Labour Force Survey was conducted using a redesigned questionnaire containing additional items and some minor definitional changes. Revisions have been made to core labour force estimates to ensure continuity, which have been published in table 3. However, this table contains estimates which have not been revised, so data from April 2001 onwards are not strictly comparable with earlier unrevised data. Information Paper: *Implementing the Redesigned Labour Force Survey Questionnaire* (Cat. no. 6295.0) contains further information about the questionnaire changes and the revised series. For details on the content of the redesigned questionnaire, see Information Paper: *Questionnaires Used in the Labour Force Survey* (Cat. no. 6232.0).

(b) Total employed person counts for Feb 2000, May 2000, Aug 2000, Nov 2000 and Feb 2001 have been revised to reflect definitional changes introduced in April 2001 whilst counts of employed persons by industry, being non core data items, have not been revised. Hence the sum of each industry for the above reference periods will not add to total employed persons. See footnote (a) for further details.

5

JOB VACANCIES

Month	Vacancies all persons	Public Sector	Private Sector	Job vacancy rate
	'000	'000	'000	%
2000				
May	26.2	6.7	19.5	1.28
August	38.8	4.1	34.7	1.86
November	35.2	5.0	30.2	1.69
2001				
February	29.5	3.7	25.7	1.41
May	23.8	3.2	20.6	1.11
August	28.7	3.8	24.9	1.39

Source: Job Vacancies, Australia (Cat. no. 6354.0) (quarterly).

6

INDUSTRIAL DISPUTES CAUSING STOPPAGE OF WORK

	Disputes		Employees involved		Working days lost				
	Beginning in period	Total	Beginning in period	Total	Manufacturing	Construction	Education, health, community services	Other industries	Total
	no.	no.	'000	'000	'000	'000	'000	'000	'000
1999									
December	29	34	5.6	6.5	6.2	1.7	—	0.5	8.4
2000									
January	19	24	2.7	2.9	3.9	2.4	—	0.8	7.1
February	18	24	7.8	8.5	6.4	12.8	—	1.5	20.7
March	17	21	4.9	8.1	4.9	10.4	2.0	2.4	19.7
April	8	15	1.7	4.2	4.0	4.0	0.5	1.4	9.9
May	23	27	8.8	9.0	1.9	7.0	—	2.1	11.0
June	19	24	6.2	6.7	6.8	0.3	—	3.8	10.9
July	22	27	7.3	9.9	1.0	3.6	2.0	0.5	7.1
August	25	36	7.0	8.1	11.2	1.4	0.3	0.8	13.8
September	21	31	10.4	12.0	8.0	2.0	0.7	0.6	11.4
October	16	24	9.6	11.1	7.9	8.7	—	0.2	16.8
November	22	28	2.2	2.6	5.4	0.9	—	0.8	7.1
December	15	19	2.3	2.6	3.2	0.4	0.2	0.5	4.2
2001									
January	18	21	2.6	2.7	2.2	1.3	—	0.1	3.6
February	20	23	2.7	2.9	9.2	1.5	—	0.1	10.8
March	22	25	11.1	11.8	3.6	8.2	—	1.5	13.3
April	20	25	1.8	2.8	1.6	0.3	—	1.8	3.7
May	17	20	7.8	8.3	6.8	4.3	—	2.3	13.5
June	16	20	2.1	2.8	9.0	1.6	0.0	0.1	10.8

Source: ABS data available on request, Industrial Disputes Collection.

7

AVERAGE WEEKLY EARNINGS OF EMPLOYEES

Month	Males			Females			Persons		
	Full-time adult ordinary time earnings	Full-time adult total earnings	All males total earnings	Full-time adult ordinary time earnings	Full-time adult total earnings	All females total earnings	Full-time adult ordinary time earnings	Full-time adult total earnings	All employees total earnings
	\$	\$	\$	\$	\$	\$	\$	\$	\$
2000									
February	797.80	843.70	732.30	696.70	710.00	492.60	761.30	795.40	616.20
May	799.10	850.10	739.60	706.00	722.60	504.80	765.90	804.70	626.30
August	813.10	861.40	741.80	724.10	740.40	513.80	781.60	818.60	632.30
November	808.70	857.00	737.80	716.20	732.70	509.80	776.20	813.30	627.60
2001									
February	826.20	865.60	748.00	736.60	749.90	533.10	794.00	824.00	645.20
May	836.50	883.60	761.10	733.40	747.30	519.60	799.60	834.90	644.10

Source: Average Weekly Earnings, States and Australia (Cat. no. 6302.0) (quarterly).

8

CONSUMER PRICE INDEX—MELBOURNE

Group	2000-2001	2000				2001	
		Mar qtr	Jun qtr	Sep qtr	Dec qtr	Mar qtr	Jun qtr
Food	135.0	128.3	130.1	131.6	132.8	136.8	138.8
Alcohol and tobacco	192.4	176.5	177.3	187.6	189.1	194.8	198.0
Clothing and footwear	114.3	106.9	106.9	116.2	115.4	112.5	113.2
Housing	98.5	91.7	91.7	97.8	98.3	99.1	98.8
Household furnishings, supplies, and services	118.1	114.3	115.7	117.9	117.1	117.8	119.5
Health	175.1	170.2	170.9	171.9	172.8	177.8	177.7
Transportation	136.2	129.2	131.2	134.5	135.6	136.2	138.6
Communication	104.5	97.2	98.5	105.4	104.6	104.3	103.7
Recreation	126.6	122.7	122.4	127.8	127.4	126.1	125.1
Education	183.7	179.4	179.4	179.7	179.8	187.6	187.6
Miscellaneous	159.7	147.8	153.4	159.3	159.4	160.2	159.9
All groups	131.6	124.7	125.6	130.4	130.8	132.2	133.0
Weighted average of eight capital cities — all groups	132.2	125.2	126.2	130.9	131.3	132.7	133.8

Base of each group: year 1989-90=100.0.

Source: Consumer Price Index, Australia (Cat. no. 6401.0) (quarterly).

Group	2000-01						Weighted average of six state capital cities—Jun qtr 2001
	1998-99	1999-2000	2000-01	Dec qtr	Mar qtr	Jun qtr	
House building							
All groups	118.0	121.7	123.1	123.4	122.8	123.1	124.4
Other than house building							
Structural timber	116.2	118.5	122.9	123.8	122.0	119.7	129.5
Clay bricks	119.6	123.8	130.6	130.7	130.7	130.6	128.0
Ready mix concrete	112.9	110.8	108.1	109.5	107.1	107.2	98.0
Precast concrete products	123.9	130.9	144.1	142.2	146.6	149.2	134.6
Steel decking and cladding	108.0	109.3	112.9	112.7	113.7	111.9	118.6
Structural steel	104.9	101.3	100.8	99.8	100.2	102.0	114.0
Reinforcing steel bar, mesh, etc.	99.5	93.8	89.2	88.8	90.3	88.4	102.8
Aluminium windows	100.4	105.1	113.1	113.2	113.3	114.5	121.3
Fabricated steel products	124.7	125.6	125.5	125.2	126.1	126.0	119.9
Builders' hardware	122.7	127.6	135.5	134.2	134.2	138.4	139.8
Sand and aggregate	120.5	120.6	122.0	118.6	125.5	125.5	124.9
Carpet	100.1	98.9	94.4	94.4	96.1	93.7	97.3
Paint and other coatings	153.8	162.4	167.5	168.5	167.3	169.0	152.2
Non ferrous pipes and fittings	111.2	116.6	127.8	127.7	131.1	131.5	143.2
All groups excluding electrical materials and mechanical services	112.3	113.0	115.3	115.2	115.7	116.2	117.6
All electrical materials	112.4	116.8	116.2	115.9	117.1	118.8	121.4
All mechanical services	118.2	120.6	117.0	117.2	117.3	118.1	115.8
All plumbing materials	122.8	127.7	130.9	131.0	131.2	132.9	132.4
All groups	113.2	114.4	115.4	115.3	115.7	116.4	117.2

Base of each index: year 1989-90 = 100.0.

Source: Producer Price Indexes, Australia (Cat. no. 6427.0) (quarterly).

10

LIVESTOCK SLAUGHTERINGS

	Cattle	Calves	Sheep	Lambs	Pigs
	'000	'000	'000	'000	'000
1998-99	1 751.3	714.4	3 079.6	6 699.4	1 572.8
1999-2000	1 523.8	678.5	3 816.0	7 144.5	1 443.7
2000-01	1 492.8	608.9	4 089.8	7 965.7	1 065.6
2000					
May	140.7	50.1	341.0	655.0	126.7
June	131.3	74.0	289.6	654.9	107.2
July	108.6	82.8	272.2	620.1	93.8
August	127.6	189.8	304.9	704.1	103.4
September	114.5	111.8	288.5	624.8	80.1
October	129.5	51.9	347.2	735.5	84.2
November	135.4	13.8	370.7	765.0	90.4
December	121.0	5.7	282.0	632.7	86.8
2001					
January	134.4	6.0	382.4	675.9	84.7
February	135.6	5.2	406.4	654.8	83.6
March	131.8	14.0	418.6	672.1	90.5
April	110.1	19.4	307.0	592.3	87.3
May	136.9	46.8	397.8	705.8	95.9
June	107.3	61.7	312.2	582.6	84.8
July	111.2	77.8	305.9	538.1	88.6
August	112.8	165.1	265.1	582.5	95.9

Source: ABS data available on request, Monthly Livestock Collection.

11

MEAT PRODUCTION

	<i>Meat (carcass weight)</i>				
	<i>Beef</i>	<i>Veal</i>	<i>Mutton</i>	<i>Lamb</i>	<i>Pigmeat</i>
	<i>tonnes</i>	<i>tonnes</i>	<i>tonnes</i>	<i>tonnes</i>	<i>tonnes</i>
1998-99	398 815	14 225	61 646	128 380	114 582
1999-2000	351 273	13 370	76 719	140 215	106 690
2000-01	347 920	11 842	81 965	155 540	78 954
2000					
May	32 077	970	6 634	13 158	9 689
June	29 732	1 397	5 797	12 955	8 119
July	25 181	1 534	5 791	12 311	7 077
August	29 353	3 638	6 555	14 079	7 875
September	26 829	2 268	5 989	12 304	6 047
October	31 100	991	7 414	14 161	6 174
November	32 630	281	7 827	14 895	6 735
December	27 544	131	5 931	12 171	6 758
2001					
January	31 525	138	7 673	13 000	6 260
February	31 995	115	7 755	12 925	5 975
March	30 517	283	7 699	13 056	6 499
April	24 948	378	5 761	11 309	6 424
May	31 783	900	7 597	13 912	6 846
June	24 515	1 184	5 973	11 419	6 284
July	26 320	1 476	5 978	10 384	6 694
August	26 941	3 169	5 243	11 401	7 577

Source: ABS data available on request, Monthly Livestock Collection.

12

NEW HOUSES AND OTHER RESIDENTIAL BUILDINGS, NUMBER OF DWELLING UNITS

<i>Period</i>	<i>New houses</i>				<i>New other residential buildings</i>			
	<i>Approved</i>	<i>Commenced</i>	<i>Under construction(a)</i>	<i>Completed</i>	<i>Approved</i>	<i>Commenced</i>	<i>Under construction(a)</i>	<i>Completed</i>
	<i>no.</i>	<i>no.</i>	<i>no.</i>	<i>no.</i>	<i>no.</i>	<i>no.</i>	<i>no.</i>	<i>no.</i>
1997-98	27 937	26 004	12 368	22 425	7 412	7 598	5 148	6 542
1998-99	29 245	29 165	14 455	26 926	8 861	8 307	6 198	7 029
1999-2000	36 474	34 716	17 861	31 231	12 045	11 725	9 715	8 105
1999								
December qtr	9 671	8 817	15 741	8 719	2 558	2 680	8 910	1 566
2000								
March qtr	9 663	8 975	18 128	6 569	3 883	2 856	9 509	2 220
June qtr	7 548	8 769	17 861	9 004	2 384	2 835	9 715	2 617
September qtr	5 558	6 138	15 780	8 224	2 433	2 430	9 555	2 516
December qtr	5 628	5 903	13 821	7 826	2 340	1 746	9 197	2 066
2001								
March qtr	6 176	5 611	13 343	6 037	2 816	2 986	10 464	1 702

(a) Under construction at the end of the period.

Source: Building Activity, Victoria (Cat. no. 8752.2) (quarterly); Building Approvals, Victoria (Cat. no. 8731.2) (quarterly).

	<i>New dwelling units(a)</i>						<i>Non-residential building(c)</i>			
	<i>Private sector</i>		<i>Public sector</i>		<i>Total(b)</i>		<i>Alterations, additions and conversions(d)</i>	<i>Private sector</i>		<i>Total all building</i>
	<i>no.</i>	<i>\$m</i>	<i>no.</i>	<i>\$m</i>	<i>no.</i>	<i>\$m</i>		<i>\$m</i>	<i>Total</i>	
MELBOURNE STATISTICAL DIVISION										
1998-99	28 615	3 550.4	666	49.6	29 276	3 600.0	800.3	1 918.6	2 642.3	6 376.8
1999-2000	37 091	5 091.3	611	51.1	37 702	5 142.4	1 019.4	2 223.4	2 650.9	8 812.7
2000-01	r 26 229	r 4 073.5	r 374	r 38.1	r 26 603	r 4 111.6	990.4	r 2 656.5	r 3 470.4	r 8 572.5
2000										
May	2 524	357.7	40	3.5	2 564	361.2	83.7	158.1	173.4	618.3
June	2 434	344.8	43	3.3	2 477	348.1	93.3	283.2	305.4	746.7
July	r 2 320	r 395.9	36	3.0	r 2 356	r 398.9	114.9	r 287.3	r 523.0	r 1 036.8
August	1 948	291.2	32	3.1	1 980	294.3	88.9	r 192.9	r 227.7	610.9
September	1 921	273.6	32	3.3	1 953	276.9	57.1	179.3	216.2	550.2
October	1 380	207.8	68	6.7	1 448	214.5	87.3	147.0	178.3	480.1
November	2 302	355.4	15	1.1	2 317	356.5	82.8	194.8	237.9	677.2
December	2 377	393.7	11	1.7	2 388	395.4	63.2	240.2	260.6	719.1
2001										
January	1 983	310.2	51	4.9	2 034	315.1	59.0	157.9	225.7	599.9
February	2 490	359.9	25	3.3	2 515	363.2	73.9	183.1	232.7	669.8
March	2 582	433.4	19	2.9	2 601	436.2	106.7	277.0	434.6	977.5
April	1 810	285.3	19	2.5	1 829	287.9	63.3	r 282.1	309.3	660.5
May	2 729	414.7	15	1.5	2 744	416.2	97.1	370.7	451.1	964.5
June	2 387	352.4	r 51	r 4.1	r 2 438	r 356.5	96.2	r 144.2	r 173.3	r 626.0
July	2 672	402.3	138	16.4	2 810	418.7	92.8	193.1	214.9	726.4
August	4 485	889.4	41	5.1	4 526	894.5	114.3	208.2	244.3	1 253.2
TOTAL VICTORIA										
1998-99	37 212	4 484.7	894	67.2	38 106	4 551.9	951.2	2 262.5	3 125.7	8 628.8
1999-2000	47 732	6 352.9	787	65.1	48 519	6 418.0	1 211.0	2 618.8	3 211.8	10 840.8
2000-01	33 779	5 062.3	r 465	r 47.9	r 34 244	r 5 110.3	1 190.8	r 3 045.0	r 4 060.4	r 10 361.9
2000										
May	3 335	456.0	49	4.2	3 384	460.3	103.5	213.2	240.2	804.0
June	3 126	425.9	49	3.8	3 175	429.7	111.6	324.2	350.7	892.0
July	2 851	462.1	38	3.1	2 889	465.2	125.7	r 312.8	r 562.6	r 1 153.5
August	2 512	364.7	59	5.3	2 571	370.0	r 105.0	r 218.9	r 267.6	742.7
September	2 499	342.8	32	3.3	2 531	346.1	73.0	226.9	292.9	712.0
October	1 963	284.0	71	7.3	2 034	291.3	108.0	188.6	228.7	628.1
November	2 964	437.5	15	1.1	2 979	438.5	97.8	226.5	290.4	826.7
December	2 939	467.5	16	2.5	2 955	470.0	79.4	r 280.0	r 311.6	861.1
2001										
January	2 514	381.4	58	5.9	2 572	387.3	73.2	181.5	266.8	727.3
February	3 132	446.3	28	4.0	3 160	450.3	89.4	202.7	257.8	797.6
March	3 237	524.8	23	3.7	3 260	528.5	126.1	323.0	501.5	1 156.2
April	2 405	362.5	24	3.1	2 429	365.6	78.8	r 307.1	346.9	791.2
May	3 604	528.3	36	3.7	3 640	532.0	116.7	404.8	517.2	1 165.9
June	3 159	460.3	r 65	r 5.1	r 3 224	r 465.5	117.7	r 172.2	r 216.4	r 799.6
July	3 547	523.4	170	20.6	3 717	544.0	r 108.8	230.3	289.2	r 942.0
August	5 578	1 040.8	68	8.4	5 646	1 049.2	136.9	245.8	298.9	1 485.0

(a) Valued at \$10,000 and over.

(b) Excludes dwelling units created as a result of conversions or construction of non-residential buildings.

(c) Valued at \$50,000 and over.

(d) Includes alterations and additions creating dwellings, alterations and additions not creating dwellings and conversions.

Source: *Building Approvals, Victoria (Cat. no. 8731.2) (quarterly)*.

	<i>Residential buildings</i>		<i>Non-residential buildings</i>						<i>Total</i>
	<i>New</i>	<i>Alterations and additions</i>	<i>Shops</i>	<i>Factories</i>	<i>Offices</i>	<i>Education</i>	<i>Health</i>	<i>Other</i>	
	<i>\$m</i>	<i>\$m</i>	<i>\$m</i>	<i>\$m</i>	<i>\$m</i>	<i>\$m</i>	<i>\$m</i>	<i>\$m</i>	
COMMENCED									
1997-98	3 850.5	891.1	598.5	241.8	428.6	270.9	250.2	1 399.8	7 931.4
1998-99	4 496.3	987.2	444.1	263.6	428.1	485.0	239.9	1 186.0	8 530.2
1999-2000	6 361.5	1 295.6	557.3	386.6	484.5	592.5	316.4	925.9	10 920.3
1999									
December qtr	1 544.5	278.8	110.4	65.8	176.6	83.2	75.9	188.1	2 523.2
2000									
March qtr	1 652.2	327.1	119.9	90.0	115.1	124.2	103.4	251.7	2 783.6
June qtr	1 623.9	384.6	208.0	161.3	109.2	299.0	65.5	244.0	3 095.5
September qtr	1 361.2	268.2	168.5	64.9	119.0	87.7	45.1	337.6	2 452.2
December qtr	1 160.5	301.4	128.7	52.0	173.5	153.9	49.4	242.3	2 261.8
2001									
March qtr	1 355.5	238.1	81.3	60.9	185.4	255.3	127.8	195.8	2 500.2
UNDER CONSTRUCTION AT END OF PERIOD									
1997-98	2 274.1	412.4	406.6	141.9	241.6	320.2	279.8	1 466.0	5 542.6
1998-99	2 745.1	451.3	420.8	120.9	190.2	485.8	243.5	1 611.2	6 268.8
1999-2000	4 199.8	595.7	473.3	224.7	217.6	711.1	291.8	1 028.7	7 742.4
1999									
December qtr	3 493.2	561.2	305.7	110.0	206.0	491.7	219.6	1 433.6	6 821.0
2000									
March qtr	4 063.0	654.0	367.9	136.6	229.7	504.9	283.1	1 104.6	7 343.9
June qtr	4 199.8	595.7	473.3	224.7	217.6	711.1	291.8	1 028.7	7 742.4
September qtr	4 171.4	608.7	626.6	195.2	234.1	593.5	259.2	1 088.6	7 777.3
December qtr	3 951.6	658.7	587.4	183.4	296.5	662.7	267.8	1 029.3	7 637.4
2001									
March qtr	4 179.6	655.5	576.0	188.5	351.1	799.8	360.3	1 007.7	8 118.6
COMPLETED									
1997-98	3 213.6	866.6	474.7	338.4	449.4	283.2	208.2	1 738.4	7 572.4
1998-99	4 068.1	992.4	487.3	294.3	524.9	328.5	305.1	1 110.3	8 111.0
1999-2000	5 049.6	1 193.5	573.2	292.4	462.3	409.0	284.1	1 606.9	9 871.0
1999									
December qtr	1 319.3	260.9	277.4	75.1	101.6	124.1	94.0	265.3	2 517.6
2000									
March qtr	1 114.1	247.4	69.9	65.5	91.9	119.6	40.6	605.8	2 354.8
June qtr	1 541.0	449.9	109.5	75.7	121.8	115.1	68.3	360.5	2 841.8
September qtr	1 490.9	276.7	95.4	91.2	102.1	209.9	73.6	289.5	2 629.3
December qtr	1 401.3	259.6	177.5	70.5	120.3	84.9	56.9	317.8	2 488.7
2001									
March qtr	1 135.9	258.4	93.9	54.4	122.5	134.3	44.3	207.8	2 051.4

Source: *Building Activity, Victoria (Cat. no. 8752.2) (quarterly)*.

15

PRIVATE NEW CAPITAL EXPENDITURE, BY SELECTED INDUSTRIES AND TYPE OF ASSET

Period	Selected industries				Type of asset	
	Mining	Manufacturing	Other selected industries	Total	New buildings and structures	Equipment, plant and machinery
	\$m	\$m	\$m	\$m	\$m	\$m
ACTUAL						
1999-2000	615	3 363	6 999	10 977	2 761	8 217
2000-01	363	3 113	6 708	10 185	2 246	7 938
2000						
March qtr	66	721	1 622	2 409	595	1 814
June qtr	151	796	1 819	2 766	656	2 110
September qtr	77	965	1 623	2 665	566	2 099
December qtr	108	r 771	r 1 729	r 2 607	r 598	r 2 010
2001						
March qtr	r 81	r 575	r 1 528	r 2 184	r 436	r 1 748
June qtr	97	802	1 829	2 728	646	2 082
EXPECTED						
2000-01	501	3 226	6 593	10 320	2 148	8 172
2001-02	639	2 610	5 159	8 408	1 361	7 047

Source: State Estimates of Private New Capital Expenditure (Cat. no. 5646.0) (quarterly).

16

COMMERCIAL FINANCE COMMITMENTS

	Fixed loan facilities						Revolving credit facilities	Total commitments
	Construction	Purchase of real property	Purchase of plant and equipment	Wholesale	Other	Total		
	\$m	\$m	\$m	\$m	\$m	\$m		
2000								
May	149.4	706.6	217.7	45.0	549.6	1 668.2	2 580.0	4 248.2
June	186.8	775.7	351.5	86.3	1 979.7	3 380.0	1 642.0	5 021.9
July	234.7	563.5	178.6	93.8	720.1	1 790.8	1 486.8	3 277.5
August	176.5	549.2	225.1	77.3	809.9	1 838.0	1 100.3	2 938.3
September	155.5	509.4	225.7	71.0	896.4	1 858.1	1 947.3	3 805.4
October	160.4	523.3	179.2	66.1	989.0	1 918.0	1 203.5	3 121.5
November	181.7	581.8	204.1	105.3	497.9	1 570.8	1 464.4	3 035.2
December	134.6	527.8	223.4	93.7	651.9	1 631.3	2 353.6	3 984.9
2001								
January	115.7	555.7	172.6	92.8	491.3	1 428.1	1 591.2	3 019.3
February	97.1	516.2	196.1	50.1	1 641.2	2 500.5	1 825.1	4 325.6
March	240.9	660.0	240.7	70.6	1 362.9	2 575.0	1 508.0	4 083.0
April	133.5	617.8	249.9	65.0	422.5	1 488.7	1 369.9	2 858.6
May	74.9	819.3	228.1	75.0	1 395.0	2 592.2	1 834.2	4 426.5
June	r 141.1	r 1 106.1	r 357.0	r 83.4	r 1 736.5	r 3 424.0	r 1 885.2	r 5 309.2
July	193.1	939.3	279.0	84.7	543.0	2 039.1	1 233.8	3 272.9

Source: ABS data available on request, Lending Finance Collection.

17

SECURED HOUSING FINANCE COMMITMENTS, DWELLING UNITS

	<i>Original series</i>		<i>Seasonally adjusted</i>		<i>Trend estimates</i>	
	<i>no.</i>	<i>\$m</i>	<i>no.</i>	<i>\$m</i>	<i>no.</i>	<i>\$m</i>
2000						
May	12 592	1 622	11 361	1 458	9 933	1 313
June	9 352	1 250	8 690	1 152	9 789	1 271
July	9 305	1 165	9 719	1 214	9 775	1 245
August	10 911	1 367	10 482	1 335	9 904	1 242
September	9 368	1 166	9 634	1 203	10 102	1 255
October	10 210	1 252	10 076	1 234	10 297	1 280
November	11 282	1 388	10 888	1 335	10 413	1 307
December	10 153	1 330	10 937	1 410	r 10 446	1 333
2001						
January	9 104	1 231	10 472	1 388	r 10 413	r 1 360
February	9 349	1 230	9 651	1 284	r 10 467	r 1 401
March	11 278	1 561	10 723	1 469	r 10 642	r 1 456
April	10 197	1 412	10 502	1 480	r 10 953	r 1 525
May	13 146	1 821	11 967	1 674	r 11 357	r 1 603
June	r 12 149	r 1 744	r 11 644	r 1 663	r 11 766	r 1 679
July	12 473	1 789	12 507	1 806	12 162	1 749

Source: *Housing Finance for Owner Occupation, Australia (Cat. no. 5609.0) (monthly)*.

18

RETAIL TURNOVER, BY INDUSTRY (EXCLUDING MOTOR VEHICLES, PARTS, PETROL, ETC.)

	<i>Food retailing</i>	<i>Department stores</i>	<i>Clothing and soft good retailing</i>	<i>Household good retailing</i>	<i>Recreational good retailing</i>	<i>Other retailing</i>	<i>Hospitality and services</i>	<i>Total</i>
	<i>\$m</i>	<i>\$m</i>	<i>\$m</i>	<i>\$m</i>	<i>\$m</i>	<i>\$m</i>	<i>\$m</i>	<i>\$m</i>
2000								
June	1 173.5	298.6	279.7	416.3	124.1	313.6	399.9	3 005.8
July	1 211.9	202.4	173.1	316.4	115.5	294.2	394.1	2 707.6
August	1 236.0	234.6	189.4	340.4	124.0	315.0	414.1	2 853.6
September	1 216.2	245.9	193.9	341.3	130.7	311.2	408.4	2 847.6
October	1 253.7	264.7	202.4	353.7	124.5	354.3	418.4	2 971.6
November	1 296.2	302.9	240.8	385.8	136.9	375.1	425.2	3 163.0
December	1 515.4	543.4	350.2	481.6	207.5	504.7	480.6	4 083.3
2001								
January	1 309.7	240.0	212.4	366.5	141.2	312.4	428.0	3 010.1
February	1 228.9	202.0	182.3	336.7	117.2	317.8	411.2	2 796.0
March	1 365.9	261.7	228.7	361.7	130.3	341.8	475.0	3 165.1
April	1 299.1	259.1	227.7	358.2	119.8	333.6	456.3	3 053.8
May	1 301.8	269.0	231.4	389.6	131.7	374.6	461.8	3 159.9
June	1 261.3	256.4	222.4	421.3	133.2	357.5	466.7	3 118.7
July	1 284.7	270.8	216.2	417.7	134.3	387.1	488.0	3 198.5
August	1 338.9	227.1	205.2	425.7	138.3	395.3	492.6	3 223.1

Source: *Retail Trade, Australia (Cat. no. 8501.0) (monthly)*.

	2000-01		Two months ending Aug 2001	
	Imports	Exports	Imports	Exports
	\$m	\$m	\$m	\$m
0 Food and live animals chiefly for food(b)(c)	1 430	5 772	246	1 007
1 Beverages and tobacco(b)(c)	211	228	36	42
2 Crude materials, inedible (except fuels)(b)(c)	677	2 163	101	321
3 Mineral fuels, lubricants, and related materials(c)	2 309	r 1 393	371	244
4 Animal and vegetable oils, fats and waxes(b)(c)	96	108	17	17
5 Chemicals and related products, n.e.c.(b)(c)	r 3 856	1 258	636	237
6 Manufacturing goods classified chiefly by material(b)(c)	4 773	2 902	837	484
7 Machinery and transport equipment(b)(c)	15 436	r 4 082	2 734	739
8 Miscellaneous manufactured articles(b)(c)	6 205	1 403	1 176	256
9 Commodities and transactions of merchandise trade, n.e.c.(d)	1 494	3 200	239	549
Total	r 36 487	r 22 509	6 394	3 896

(a) Any discrepancies between sums of the component items and totals are due to rounding.

(b) Excludes export commodities subject to a confidentiality restriction. These are included in Division 9.

(c) Excludes imports commodities subject to a confidentiality restriction. These are included in Division 9.

(d) Includes export and import commodities subject to a confidentiality restriction.

Source: ABS data available on request, International Merchandise Trade.

Country	1999–2000		2000–01		Two months ending Aug 2001	
	Imports \$m	Exports \$m	Imports \$m	Exports \$m	Imports \$m	Exports \$m
Belgium–Luxembourg	258	110	275	168	44	26
Brazil	105	46	123	70	22	10
Canada	445	135	412	r 195	59	34
China	3 029	1 124	3 891	r 1 430	764	240
Fiji	194	286	142	361	24	53
Finland	187	9	227	10	40	2
France	622	136	748	156	143	25
Germany	2 402	397	2 585	r 507	520	69
Hong Kong (SAR of China)	403	945	408	r 1 062	89	162
India	262	193	r 291	220	57	53
Indonesia	893	295	1 049	391	242	97
Italy	1 036	332	1 028	464	204	79
Japan	4 416	1 860	4 828	2 247	858	366
Korea, Republic of	870	1 236	1 065	1 308	137	226
Malaysia	1 118	514	1 037	531	174	90
Mexico	111	74	130	157	21	24
Netherlands	318	105	302	150	55	21
New Zealand	1 491	2 297	1 535	r 1 875	332	339
Pakistan	85	56	112	76	13	9
Papua New Guinea	67	139	22	145	2	23
Philippines	163	385	175	474	29	86
Saudi Arabia	221	704	314	1 206	24	287
Singapore	632	1 475	685	1 517	114	221
South Africa	166	229	r 208	204	42	38
Sweden	607	29	541	28	62	7
Switzerland	319	40	342	47	69	9
Taiwan	922	835	959	816	158	93
Thailand	673	439	802	r 491	138	106
United Kingdom	1 793	694	1 842	r 696	310	93
United States of America	7 701	1 630	7 379	r 2 073	1 185	400
Other and unknown	2 208	2 285	r 3 030	3 434	463	608
Total	33 717	19 034	r 36 487	r 22 509	6 394	3 896

(a) The list of countries in this table reflects the volume of trade with Victoria. Information about Victoria's trade with other countries is available on request.

Source: ABS data available upon request, *International Merchandise Trade*.

21

VALUE OF OVERSEAS TRADE—VICTORIA AND AUSTRALIA

Period	Victoria				Australia
	Imports	Exports	Imports	Exports	Excess of exports
	\$m	\$m	\$m	(including re-exports) \$m	\$m
1999–2000	33 717	19 034	110 078	97 286	-12 792
2000–01	r 36 487	r 22 509	r 118 255	r 119 555	r 1 300
2000					
June	2 976	1 564	10 436	9 193	-1 243
July	2 908	1 640	9 755	9 367	-388
August	3 319	1 763	10 716	9 374	-1 342
September	3 041	1 852	9 852	9 779	-73
October	3 442	2 205	11 154	10 551	-603
November	3 443	1 949	11 006	10 431	-575
December	2 819	1 836	9 250	10 294	1 044
2001					
January	2 882	1 485	9 230	8 327	-903
February	2 711	1 903	8 322	r 9 223	r 901
March	3 076	r 2 073	9 932	r 10 576	r 644
April	2 955	1 835	r 9 574	r 10 305	r 731
May	3 073	r 1 986	9 985	r 10 682	r 697
June	2 819	1 983	r 9 477	r 10 646	r 1 169
July	r 2 973	r 1 902	r 9 648	r 10 591	r 943
August	3 421	1 994	10 542	10 539	-3

Source: ABS data available on request, International Merchandise Trade.

22

TOURIST ACCOMMODATION

Quarter ended	Hotels, motels, guest houses and serviced apartments(a)						
	Establishments	Guest rooms	Bed spaces	Room nights occupied	Room occupancy rate	Persons employed	Takings from accommodation
	no.	no.	no.	'000	%	no.	\$'000 (b)
1999							
September	698	30 934	85 483	1 589.5	56.0	21 780	184 105
December	705	31 317	86 058	1 672.7	58.1	21 633	191 644
2000							
March	707	31 332	86 134	1 773.4	62.3	21 498	212 986
June	705	31 384	86 372	1 628.9	57.1	21 586	185 332
September	703	31 158	85 719	1 608.7	56.2	21 784	r 207 430
December	701	31 155	85 238	1 698.9	59.4	21 700	r 217 263
2001							
March	706	32 023	87 185	1 787.2	62.1	21 890	r 241 401
June	705	32 295	87 866	1 619.6	55.1	22 008	202 556

(a) Comprising establishments with 15 or more rooms or units.

(b) Revisions to takings from accommodation data for the September quarter 2000 through to the March quarter 2001 reflect adjustments to account for instances where businesses did not or were not able to provide takings from accommodation inclusive of the Goods and Services Tax. More information is available in *Tourist Accommodation, Australia* (ABS Cat. no. 8635.0).

Source: *Tourist Accommodation, Australia* (Cat. no. 8635.0) (quarterly).

FOR MORE INFORMATION...

- INTERNET* **www.abs.gov.au** the ABS web site is the best place to start for access to summary data from our latest publications, information about the ABS, advice about upcoming releases, our catalogue, and Australia Now—a statistical profile.
- LIBRARY* A range of ABS publications is available from public and tertiary libraries Australia-wide. Contact your nearest library to determine whether it has the ABS statistics you require, or visit our web site for a list of libraries.
- CPI INFOLINE* For current and historical Consumer Price Index data, call 1902 981 074 (call cost 77c per minute).
- DIAL-A-STATISTIC* For the latest figures for National Accounts, Balance of Payments, Labour Force, Average Weekly Earnings, Estimated Resident Population and the Consumer Price Index call 1900 986 400 (call cost 77c per minute).

INFORMATION SERVICE

Data which have been published and can be provided within five minutes are free of charge. Our information consultants can also help you to access the full range of ABS information—ABS user-pays services can be tailored to your needs, time frame and budget. Publications may be purchased. Specialists are on hand to help you with analytical or methodological advice.

- PHONE* **1300 135 070**
- EMAIL* **client.services@abs.gov.au**
- FAX* 1300 135 211
- POST* Client Services, ABS, GPO Box 796, Sydney 1041

WHY NOT SUBSCRIBE?

ABS subscription services provide regular, convenient and prompt deliveries of ABS publications and products as they are released. Email delivery of monthly and quarterly publications is available.

- PHONE* 1300 366 323
- EMAIL* subscriptions@abs.gov.au
- FAX* 03 9615 7848
- POST* Subscription Services, ABS, GPO Box 2796Y, Melbourne 3001



2130320009013
ISSN 0158-202X

RRP \$18.00